



MAHE INSTITUTE OF DENTAL SCIENCES & HOSPITAL

Affiliated to Pondicherry Central University, Recognized by Dental Council of India

Chalakkara, P.O. Pallor, Mahe-673 310

U.T. of Puducherry. Ph : 0490 2337765

7.1.3: The institution has facilities for alternate sources of energy and energy conservation devices

- 1. solar energy**
- 2. wheeling to the grid**
- 3. sensor based energy conservation**
- 4. Biogas plant**
- 5. Use of LED bulbs / power efficient equipment**

INDEX

S.NO	DESCRIPTION	PAGE NUMBER
1	Certificate of head of institution	2
2	Facilities for alternate sources of energy	4



MAHE INSTITUTE OF DENTAL SCIENCES & HOSPITAL

Affiliated to Pondicherry Central University, Recognized by Dental Council of India

Chalakkara, P.O. Pallor, Mahe-673 310

U.T. of Puducherry. Ph : 0490 2337765

CERTIFICATE OF HEAD OF INSTITUTION



MAHE INSTITUTE OF DENTAL SCIENCES & HOSPITAL

Affiliated to Pondicherry Central University, Recognized by Dental Council of India

Chalakkara, P.O. Pallor, Mahe-673 310

U.T. of Puducherry. Ph : 0490 2337765

Dr. ANIL MELATH, MDS.,

PINCIPAL

TO WHOMSOEVER IT MAY CONCERN

This is to certify that our institution has facilities for alternate sources of energy and energy conservation devices:

- 1. Solar energy**
- 2. Sensor based energy conservation**
- 3. Biogas plant**
- 4. Use of LED bulbs / power efficient equipment**

Details are given :

PRINCIPAL



MAHE INSTITUTE OF DENTAL SCIENCES & HOSPITAL

Affiliated to Pondicherry Central University, Recognized by Dental Council of India

Chalakkara, P.O. Pallor, Mahe-673 310

U.T. of Puducherry. Ph : 0490 2337765

FACILITIES FOR ALTERNATE SOURCES OF ENERGY



MAHE INSTITUTE OF DENTAL SCIENCES & HOSPITAL

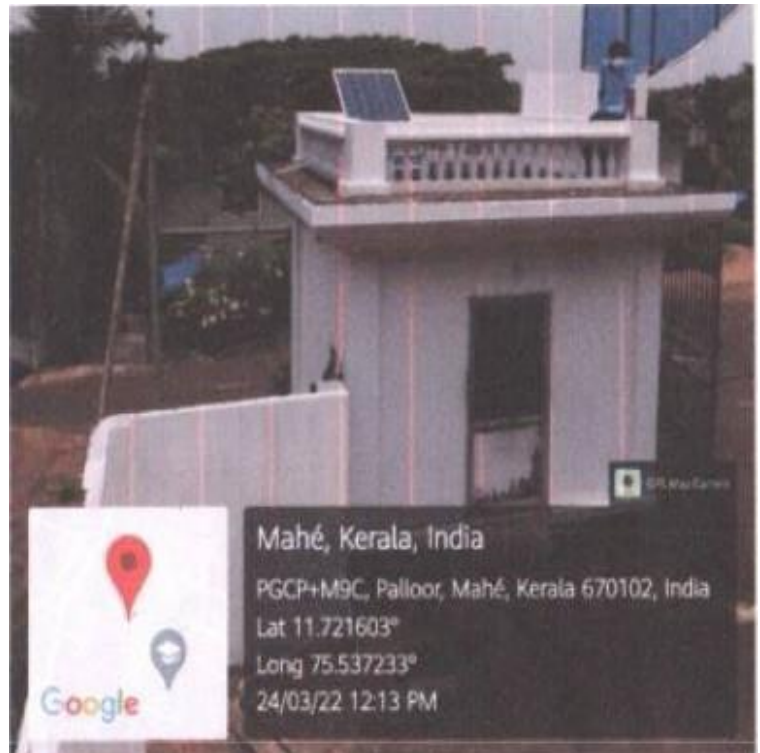
Affiliated to Pondicherry Central University, Recognized by Dental Council of India

Chalakkara, P.O. Pallor, Mahe-673 310

U.T. of Puducherry. Ph : 0490 2337765

ALTERNATE SOURCES OF ENERGY AND ENERGY CONSERVATION DEVICES

SOLAR ENERGY



Solar panels converting the solar energy into electrical energy is installed in the campus providing a more clean energy source utilizing the natural energy from the sun.



MAHE INSTITUTE OF DENTAL SCIENCES & HOSPITAL

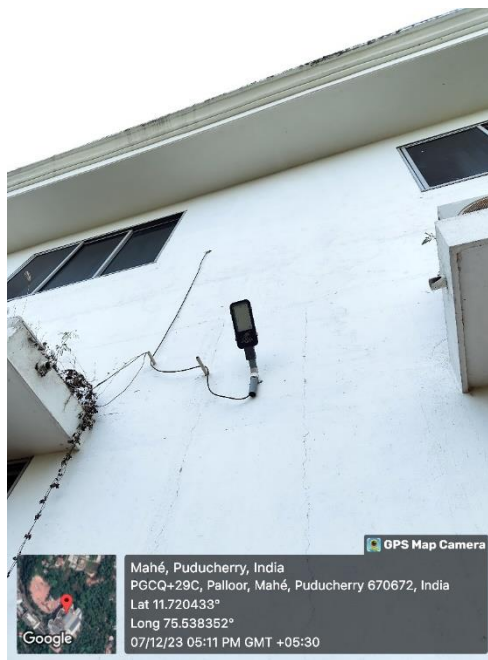
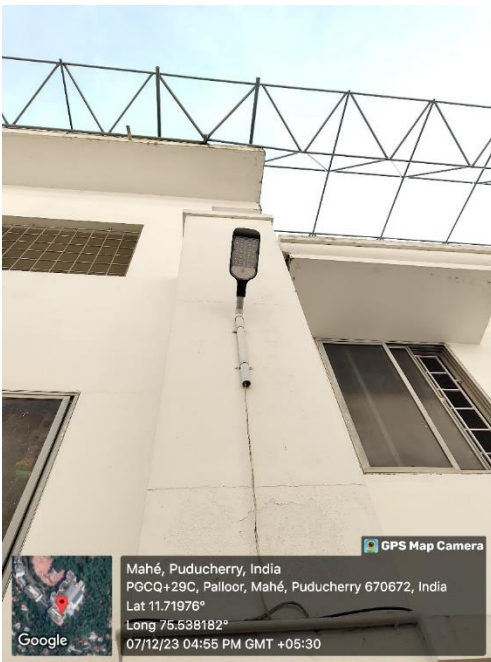
Affiliated to Pondicherry Central University, Recognized by Dental Council of India

Chalakkara, P.O. Pallor, Mahe-673 310

U.T. of Puducherry. Ph : 0490 2337765

ALTERNATE SOURCES OF ENERGY AND ENERGY CONSERVATION DEVICES

SENSOR BASED ENERGY CONSERVATION



Sensor based lights convert light energy to an electrical signal output. They can detect the amount of light in a room or in an outdoor environment and raise /lower the blinds or switch on/off the lights automatically to improve the comfort level of the user thus conserving the electrical energy.



MAHE INSTITUTE OF DENTAL SCIENCES & HOSPITAL

Affiliated to Pondicherry Central University, Recognized by Dental Council of India

Chalakkara, P.O. Pallor, Mahe-673 310

U.T. of Puducherry. Ph : 0490 2337765

ALTERNATE SOURCES OF ENERGY AND ENERGY CONSERVATION DEVICES

BIOGAS PLANT



Biogas being an environmentally-friendly, renewable energy source produced by the breakdown of organic matter such as food scraps and animal waste in an anaerobic environment is well functioning and maintained in the institution.



MAHE INSTITUTE OF DENTAL SCIENCES & HOSPITAL

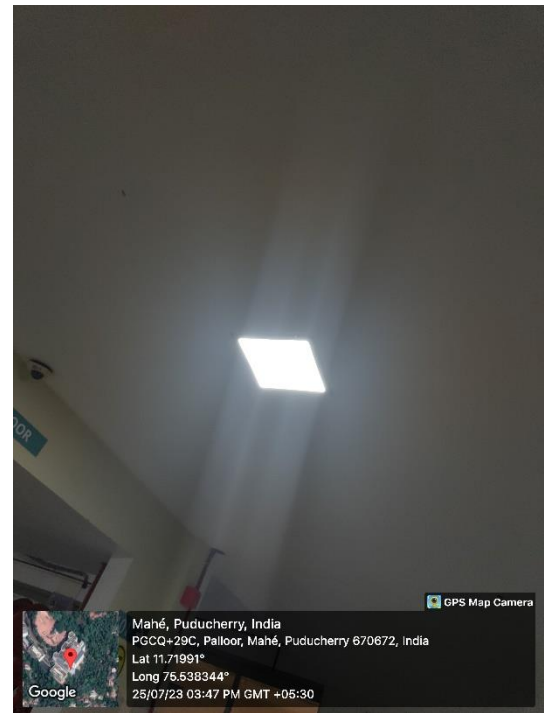
Affiliated to Pondicherry Central University, Recognized by Dental Council of India

Chalakkara, P.O. Pallor, Mahe-673 310

U.T. of Puducherry. Ph : 0490 2337765

ALTERNATE SOURCES OF ENERGY AND ENERGY CONSERVATION DEVICES

LED BULBS



LEDs are more energy efficient than conventional lights. LED bulbs and panels has been installed throughout the institution especially in the research lab, corridors, clinical areas, patient waiting areas and badminton court as part of energy conservation.